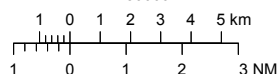


**VISUAL APPROACH CHART - ICAO**

1:250000



**AD ELEV 139 FEET**

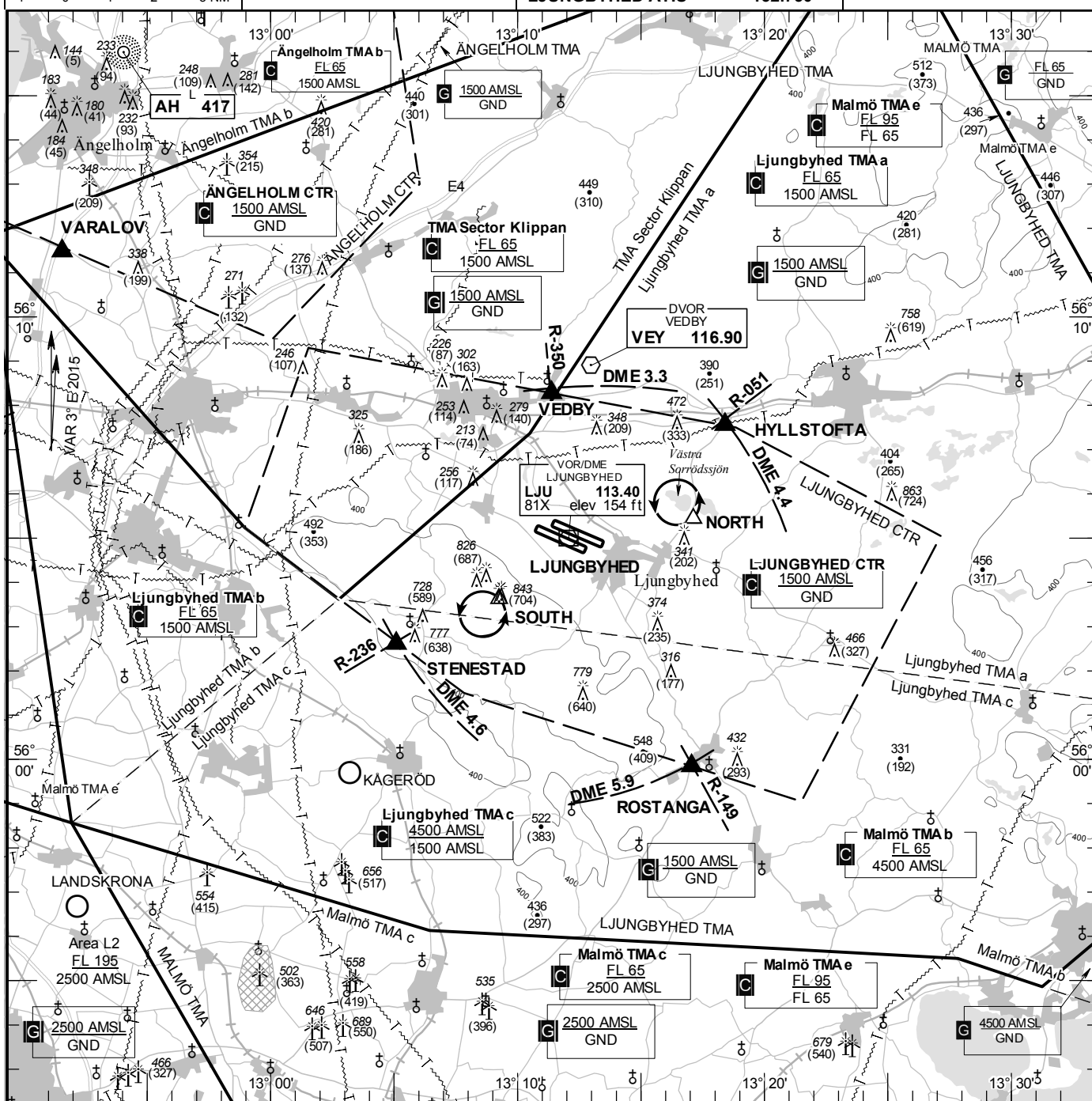
ELEV and ALT in ft  
HGT in ft above AD ELEV

**TA 5000 AMSL**

LJUNGBYHED TOWER	130.700
LJUNGBYHED GROUND	129.700
LJUNGBYHED CONTROL	121.650
LJUNGBYHED ATIS	129.550
LJUNGBYHED ATIS	132.750

**AD 2 ESTL 6-1**

**LJUNGBYHED SWEDEN**



**Communication failure**

- 1 SQUAWK 7600
- 2 Enter CTR via HYLLSTOFTA – Holding NORTH or via STENESTAD-Holding SOUTH at or below 1200 ft AMSL to traffic circuit. Transmit blind your intentions.
- 3 Flash LDG-lights and watch TWR for optical signals. From holding NORTH proceed overhead the field and join right hand traffic circuit RWY 11R or left hand traffic circuit RWY 29L. From holding SOUTH proceed for right hand traffic circuit RWY 11R or left hand traffic circuit RWY 29L.

**Remark**

Right hand traffic circuit when RWY 29L/29R are in use.

Sector KLIPPAN:  
ATC provider, see ENR 2.1.

RWY	THR	PAPI
NR	ELEV	(MEHT)
11L	126 ft	NIL
29R	139 ft	NIL
11R	122 ft	APAPI Left/2.86°
29L	136.2 ft	Left/3.00° (57 ft)

**Legend**  
See GEN 2.3

**Entry / exit point**

VEDBY	560816N 0131123E
HYLLSTOFTA	560733N 0131824E
ROSTANGA	555950N 0131703E
STENESTAD	560236N 0130505E

**Holding**

**NORTH:** Hold over Västra Sorrodssjön, north west of point 560525N 0131707E  
**SOUTH:** Hold south of the mast, south of point 560336N 0130915E